

# Rotary Seal XSR03

## Function:

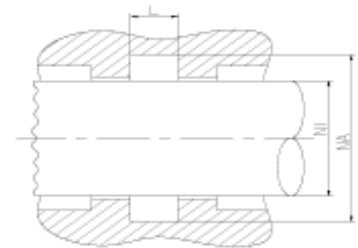
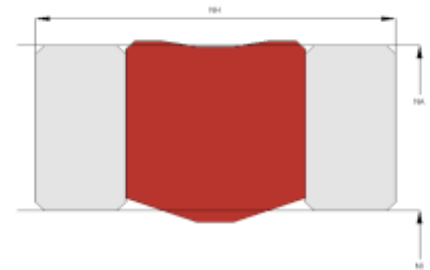
Rotary seals are designed to seal the pressurized hydraulic fluid against the atmosphere, preventing leakage and pollution of the environment or to transfer liquids and/or gases from a stationary part into or out of rotating machinery.

## Features:

- Asymmetrical, double acting rotary seal for high pressures and low speeds, designed with interference on the OD which provides a good static fit in the groove.
- Dynamic sealing on the ID.
- Backup elements on the left and right side for maintaining the function also at large sealing gaps.
- Excellent static and dynamic sealing performance.

## Application:

Slow moving shafts, pivoting movements, swivel or rotary joints.  
Used as seal between two pressurized spaces.  
Max. pressure 400 bar, max. speed 0.2 m/s.



## Seal housing recommendation:

| Tolerances | [mm]  |  |
|------------|-------|--|
| L          | + 0.2 |  |
| Ø NA       | H 8   |  |
| Ø NI       | f 7   |  |

| Surface roughness | Rtmax [ $\mu$ ] | Ra [ $\mu$ ] |
|-------------------|-----------------|--------------|
| Bottom of groove  | $\leq 10$       | $\leq 1.8$   |
| Face of groove    | $\leq 15$       | $\leq 3$     |

| Sliding surface | Rtmax [ $\mu$ ] | Ra [ $\mu$ ]      |
|-----------------|-----------------|-------------------|
| PU, elastomeres | $\leq 2.5$      | $\leq 0.1 - 0.5$  |
| PTFE            | $\leq 2$        | $\leq 0.05 - 0.3$ |

## Installation:

Snap-in installation.  
Backup elements shall not be split!