

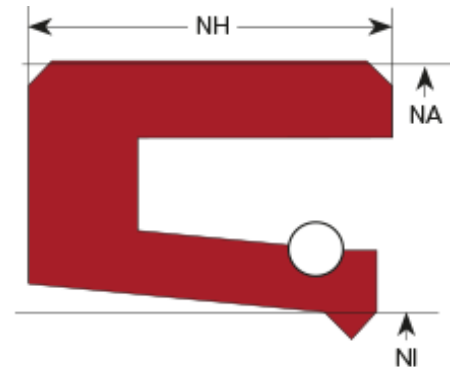
Rotary Seal XSOS03

Function:

Rotary seals are designed to seal the pressurized hydraulic fluid against the atmosphere, preventing leakage and pollution of the environment or to transfer liquids and/or gases from a stationary part into or out of rotating machinery.

Features:

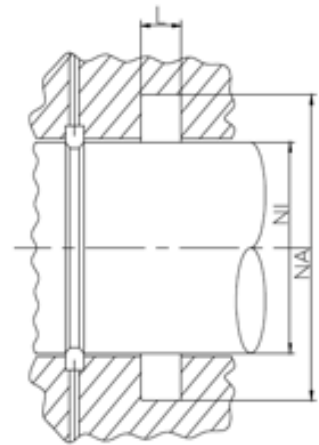
- The profile is designed with interference on the OD which provides a good static fit, preventing the entry of humidity and other contamination via the outside diameter.
- Solid version of XSOS01 profile. For version in PTFE or similar housing must be axially accessible.
- Tension spring for increasing the bonding force.
Not suitable for high pressure from the trailing side.



Application:

Pumps, electric motors, swiveling cylinders, etc.

Max. pressure 0.5 bar, max. speed: PU 5 m/s; NBR 10m/s; FPM 25m/s.



Seal housing recommendation:

Tolerances	[mm]	
L	+0.2	
Ø NA	H8	
Ø NI	f8	

Surface roughness	Rtmax [μ]	Ra [μ]
Bottom of groove	≤ 6.3	≤ 1.6
Face of groove	≤ 15	≤ 3

Sliding surface	Rtmax [μ]	Ra [μ]
PU, elastomeres	≤ 2.5	$\leq 0.1 - 0.5$
PTFE	≤ 2	$\leq 0.05 - 0.3$

Installation:

Snap-in installation.