

Guide Ring **XSBWR01**

Function:

Guiding elements are designed to prevent metal to metal contact between components of hydraulic systems e.g. piston and cylinder barrel or shaft and cylinder head.

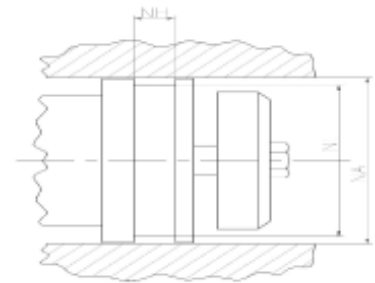
Features:

- Normally cut at an angle for easy installation, but also available as non-split version
- Low dynamic friction.
- Low break-away forces after long standstills.



Application:

Reciprocating pistons and rods in hydraulic cylinders, plungers.
Max. speed 4 m/s, radial loads max. 70 N/mm².



Seal housing recommendation:

Tolerances	[mm]	
L < 10 mm	+ 0.2	
L ≥ 10 mm	+ 0.3	
Ø NA	H8	
Ø NI	h9	

Surface roughness	Rtmax [µ]	Ra [µ]
Bottom of groove	≤ 6.3	≤ 1.6
Face of groove	≤ 15	≤ 3

Sliding surface	Rtmax [µ]	Ra [µ]
PU, elastomeres	≤ 2.5	≤ 0.1 - 0.5
PTFE	≤ 2	≤ 0.05 - 0.3

Installation:

Snap-in installation