

Mining Seal XSW51

Function:

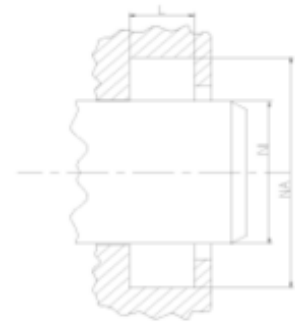
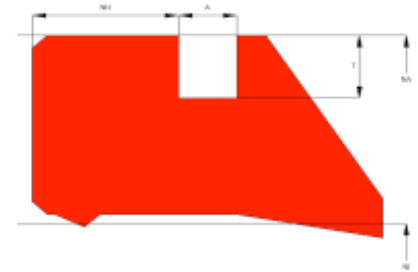
Wipers are designed to keep dust, dirt, sand and others off the rod and the sealing and guiding elements, avoiding abrasive damage caused by external contamination.

Features:

- The profile is designed with interference on the OD which provides a good static fit, preventing the entry of humidity and other contamination via the outside diameter.
- Additional sealing on the housing face.
- Sharp wiping lip to ensure any dirt is wiped off properly.
- Secondary lip for stabilizing and reducing the residual oil film.
- Pressure from the trailing side has to be avoided.

Application:

Reciprocation rods in hydraulic cylinders, plungers, rolling mills.
Max. pressure 0 bar, max. speed 2 m/s.



Seal housing recommendation:

Tolerances	[mm]	
L < 10mm	+0.2	
L ≥ 10mm	+0.3	
Ø NA	H11	
Ø NI	f 8	

Surface roughness	Rtmax [μ]	Ra [μ]
Bottom of groove	≤ 6.3	≤ 1.6
Face of groove	≤ 15	≤ 3

Sliding surface	Rtmax [μ]	Ra [μ]
PU, elastomeres	≤ 2.5	≤ 0.1 - 0.5
PTFE	≤ 2	≤ 0.05 - 0.3

Installation:

Snap-in installation.

When the cylinder can not be dismantled, the wiper can also be installed in cut version. In this case the diameter should be increased by 2-3%.