

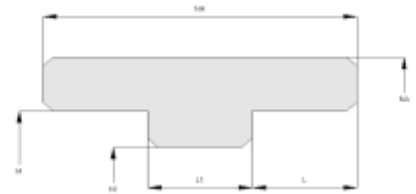
Guide Ring XSBWR05

Function:

Guiding elements are designed to prevent metal to metal contact between components of hydraulic systems e.g. piston and cylinder barrel or shaft and cylinder head.

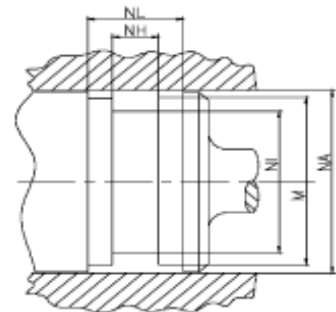
Features:

- Normally cut at an angle for easy installation, but also available as non-split version.
- For use in piston applications.
- Integrated collar on inside diameter.
- Low dynamic friction.
- Low break-away forces after long standstills.



Application:

mainly used at minor loads e.g. pneumatic applications



Seal housing recommendation:

Tolerances	[mm]	
NH	+0.2	
NL	+0.2	
Ø NA	H8	
Ø NI	h9	

Surface roughness	Rtmax [μ]	Ra [μ]
Bottom of groove	≤ 6.3	≤ 1.6
Face of groove	≤ 15	≤ 3

Sliding surface	Rtmax [μ]	Ra [μ]
PU, elastomeres	≤ 2.5	$\leq 0.1 - 0.5$
PTFE	≤ 2	$\leq 0.05 - 0.3$

Installation:

Snap-in installation