

Rotary Seal **XSPS19A**

Function:

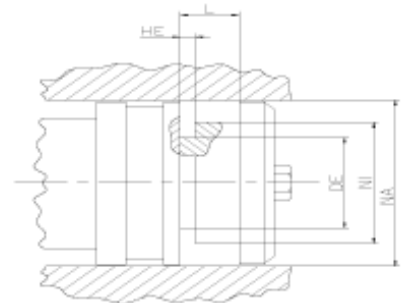
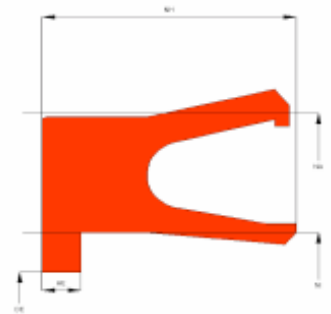
Rotary seals are designed to seal the pressurized hydraulic fluid against the atmosphere or between two pressurized spaces.

Features:

- Asymmetrical, single acting rotary seal with clamping flange.
- Preload effected through V-spring.
- Dynamic sealing lip shorter than static lip to avoid drag pressure.
- Excellent static and dynamic sealing performance.
- Useable for short and long stroke lengths.
- Low friction in dry running or poor lubrication conditions, no stick-slip effect.

Application:

Reciprocating and swivelling pistons or housings.
 Chemical and pharmaceutical industry, aggressive fluids and high temp.
 Max. pressure 150 bar, max. speed 2 m/s.



Seal housing recommendation:

| Tolerances | [mm] | |
|------------|------|--|
| L < 10mm | +0.2 | |
| L ≥ 10mm | +0.3 | |
| Ø NA | H9 | |
| Ø NI | h10 | |

| Surface roughness | Rtmax [µ] | Ra [µ] |
|-------------------|-----------|--------|
| Bottom of groove | ≤ 6.3 | ≤ 1.6 |
| Face of groove | ≤ 15 | ≤ 3 |

| Sliding surface | Rtmax [µ] | Ra [µ] |
|-----------------|-----------|--------------|
| PU, elastomeres | ≤ 2.5 | ≤ 0.1 - 0.5 |
| PTFE | ≤ 2 | ≤ 0.05 - 0.3 |

Installation:

Installation in open housing.