

Symmetrical Seal XSPRS10-12

Function:

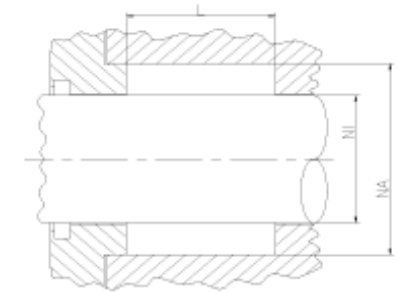
Symmetrical piston/rod seals are designed to seal the pressurized hydraulic fluid against the atmosphere or between two pressurized spaces.

Features:

- Symmetrical, single acting piston/rod seal, combined with pressure ring and support ring.
- By adjusting the number of packings friction and leakage characteristics can be influenced.
- Excellent static and dynamic sealing performance.
- Excellent performance in high pressure conditions.
- Useable for short and long stroke lengths.
- High wear resistance.

Application:

- Reciprocating pistons/rods in hydraulic cylinders, plungers etc.
- Used in heavy duty applications (presses) with return stroke by equipment weight.
- Max. pressure 500 bar, max. speed 0.5 m/s.



Seal housing recommendation:

Tolerances	[mm]	
L < 10 mm	+ 0.2	
L ≥ 10 mm	+ 0.3	
Ø NA (rod groove)	H10	
Ø NI (rod diam.)	f 8	
Ø NA (cylinder diam.)	H9	
Ø NI (piston groove)	h10	

Surface roughness	Rtmax [µ]	Ra [µ]
Bottom of groove	≤ 6.3	≤ 1.6
Face of groove	≤ 15	≤ 3

Sliding surface	Rtmax [µ]	Ra [µ]
PU, elastomeres	≤ 2.5	≤ 0.1 - 0.5
PTFE	≤ 2	≤ 0.05 - 0.3

Installation:

Installation normally in open housings.

At closed housings the parts need to be split. In this case the seal must be done slightly larger (approx. 1% in diameter)