

# Wiper Ring **XSWR11**

**Function:**

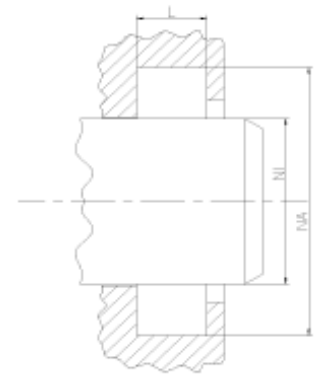
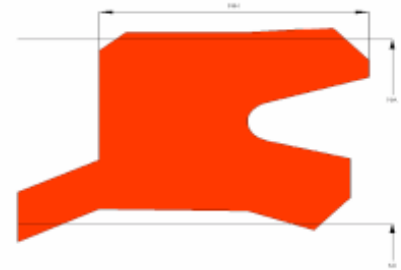
Wipers are designed to keep dust, dirt, sand and others off the rod and the sealing and guiding elements, avoiding abrasive damage caused by external contamination.

**Features:**

- The profile is designed with interference on the OD which provides a good static fit, preventing the entry of humidity and other contamination via the outside diameter.
- The design of the wiper lip supports the recirculation of the remaining oil film into the cylinder, whilst the exclusion of contamination is guaranteed.
- The sealing lip on the fluid side reduces the remaining oil film to a minimum if used in combination with composite seals as a tandem seal.
- For housings acc. to ISO 6195-Type C.

**Application:**

Reciprocation rods in hydraulic cylinders, plungers.  
Can also be used as rod seal/wiper combination in pneumatic applications.



**Seal housing recommendation:**

| Tolerances | [mm]  |  |
|------------|-------|--|
| L < 10 mm  | + 0.2 |  |
| L ≥ 10 mm  | + 0.3 |  |
| Ø NA       | H11   |  |
| Ø NI       | f 8   |  |

| Surface roughness | Rtmax [µ] | Ra [µ] |
|-------------------|-----------|--------|
| Bottom of groove  | ≤ 6.3     | ≤ 1.6  |
| Face of groove    | ≤ 15      | ≤ 3    |

| Sliding surface | Rtmax [µ] | Ra [µ]       |
|-----------------|-----------|--------------|
| PU, elastomeres | ≤ 2.5     | ≤ 0.1 - 0.5  |
| PTFE            | ≤ 2       | ≤ 0.05 - 0.3 |

**Installation:**

Snap-in installation.  
When the cylinder can not be dismantled, the wiper can also be installed in cut version.  
In this case the diameter should be increased by 2-3%.